

*Move your world*

**INDUS MOTOR COMPANY LIMITED**

Facebook: ToyotaPakistanOfficial | Twitter: @ToyotaPak | Instagram: ToyotaPakistan | Website: www.toyota-indus.com

**Contact Information**

Indus Motor Company Limited  
Plot No. N.W.Z./1/P-1, Port Qasim Authority,  
Karachi, Pakistan. Phone: +92-21-34721100  
UAN: +92-21-111-86-96-82 (+92-21-111-TOYOTA)

**Customer Assistance Centre**

Toll Free: 0800-11123 | Phone: +92-21-34721100  
Email: customer.relations@toyota-indus.com

For more information  
SMS "CROSS" to



Scan and Access  
Toyota Bot



**HYBRID  
ELECTRIC**

*Driven for*  
**MORE**

*The All New Corolla Cross Hybrid Electric*

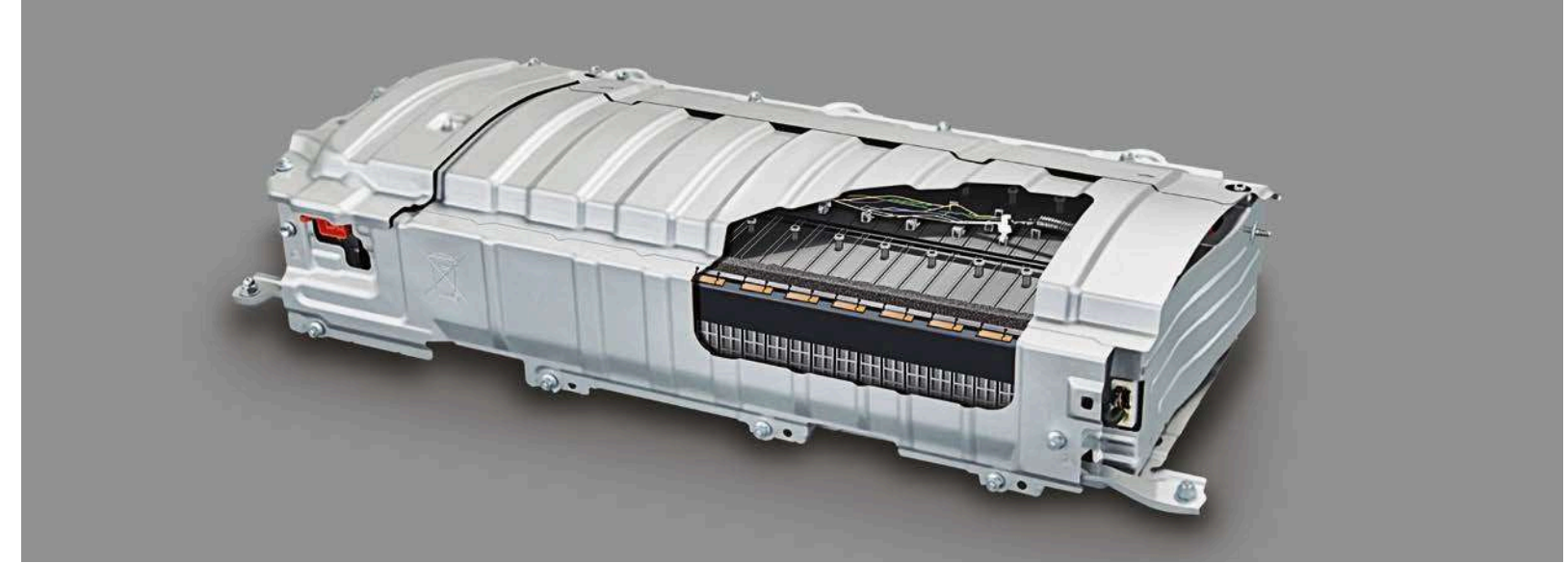


*Move your world*

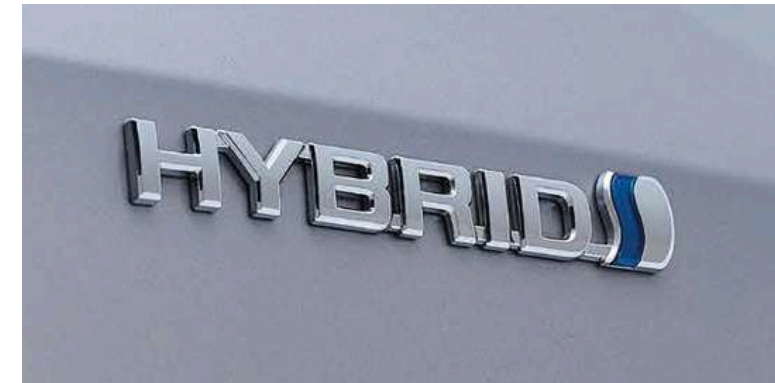
# *Driven for* **MORE**

Introducing the all-new Toyota Corolla Cross Hybrid Electric. This vehicle combines the power of an electric motor and a highly efficient petrol engine through Toyota's Hybrid Synergy Drive. Experience seamless performance, exceptional fuel efficiency and reduced emissions with features like regenerative braking and multiple driving modes. This hybrid marvel offers impressive fuel economy and a quieter, smoother ride, enhancing overall comfort. Elevate your lifestyle and embrace eco-friendly drive.





The 4th Generation Hybrid Battery provides smooth, quiet and relaxed performance with incredible fuel efficiency. Experience added peace of mind with a Hybrid Battery warranty of **6 years or 160,000 KM** (whichever comes first).



**Toyota Hybrid** allows a remarkably smooth, quiet and relaxed performance with incredible fuel efficiency.



Take the command and choose between **Multiple Driving Modes: EV, ECO & Power** for lower emissions and a thrilling drive.

# TOYOTA *Hybrid Electric*

Toyota Hybrid Electric technology has powertrain components that work in harmony and eliminate many of the components found in a conventional powertrain. Fewer moving parts means less wear and tear, fewer parts to replace and lower maintenance costs. This vehicle is designed to build power in a smooth, linear fashion that's effortless, drama-free and easy to modulate, and also provides exceptional fuel economy, lower ownership cost and quiet cabin experience.





# *Toyota New Global* **ARCHITECTURE**

A new car-making philosophy, which breaks the mold of conventional thinking, and takes a fresh look at 'Making Ever-better Cars'. It is aimed at enhancing fundamental vehicle performance through enhanced powertrains and platforms, while enabling attractive styling.

## **TNGA is built upon two pillars...**

Core Strength

Emphasized Personality

... and five domains, driven by engineering beliefs

Driving Quality

Comfort

User-Friendliness

Pride of  
Ownership

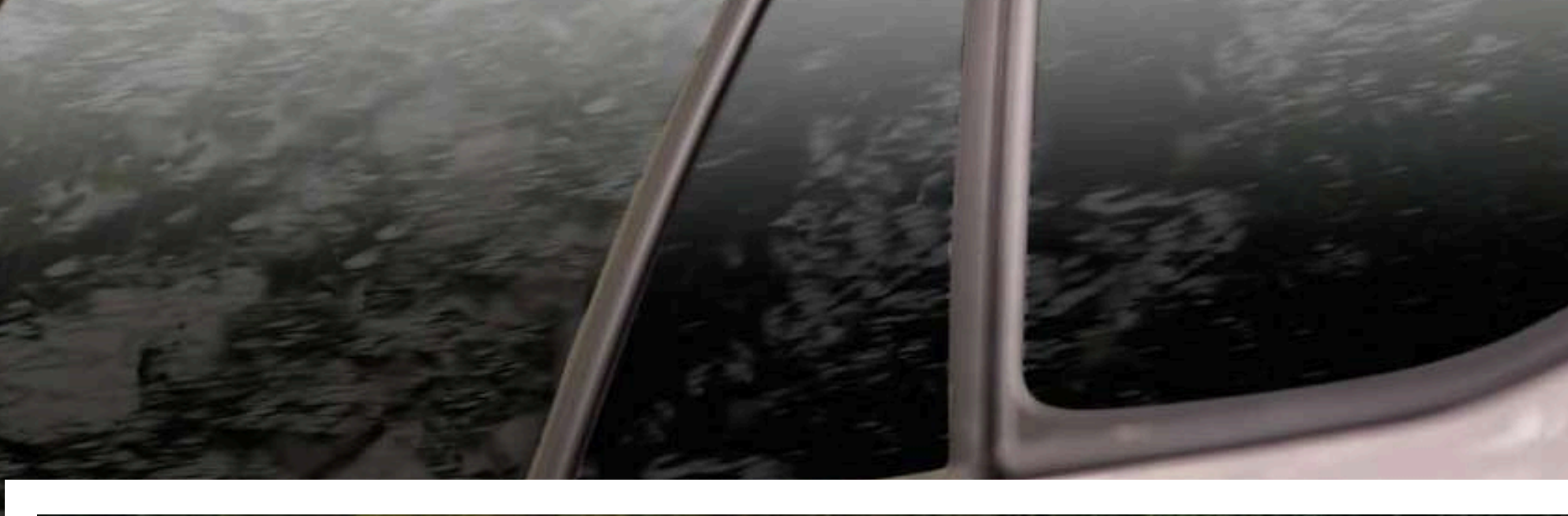
Security



# MORE *Grace*

Experience a world of unparalleled elegance with the Corolla Cross Hybrid Electric. The exterior of the Corolla Cross isn't just a sight to behold, it's a testament to a new standard of style. With its sculpted body and striking presence, this remarkable vehicle fulfills all offerings that a premium class vehicle should offer from stylish alloy wheels to powerful LED headlamps, sturdy roof rails, and much more. Every aspect of the exterior is meticulously designed to enhance its grandeur against the cityscapes.







The Bi-Beam **LED Headlamps & DRL** provide superior visibility with its cutting-edge and sleek appearance.



The stylish **Alloy Wheels** enhance the strength, stability and grip on the road.



Park effortlessly in tight spots with **Auto Retractable Side Mirrors**.



Make the scenery around you come alive with the **Moonroof**.



Brighter LED-illuminated **Rear Lamps** with modern appearance for faster communication of braking intent.



**Roof Rails** facilitate the easy installation of accessories such as a luggage carrier or roof rack cross bars.



**LED Fog Lamps** help cut out the glare from fog, all the while adding to the style and appearance.



The **Smart Entry System** lets you lock and unlock the doors without using a key for your convenience.





# MORE *Comfort*

Step inside the Corolla Cross Hybrid Electric and discover a world of redefined comfort; it's the very essence of the interior. From the seamless push-start ignition to the luxurious Terra Rossa seat covers that are the epitome of comfort, this vehicle is designed to simplify and amplify your life. The 9-inch floating display and powered seats are more than just features; they serve as your partners in your day-to-day routine. Additionally, with ample luggage space, this vehicle ensures that every journey is made more convenient.



Start every journey with ease using the **Push-Start Button**.



The grand **9-Inch Floating Display** allows multiple functions, including Energy Monitor, Apple Carplay & Android Auto.



**Dual Zone Auto Climate Control** offers both the passenger and the driver to adjust the temperature according to their comfort.



Switch between Analog, Digital and Hybrid Speedometer with the **7-inch Multi-Info Display**.





The ultra-modern **Terra Rossa Seat Covers** are a staple of comfort and luxury.



Adjust your seats conveniently according to your comfort with **Powered Seat**.



**Rear Vents** are located at the rear cabin to provide comfort to the passengers at the back.



Spacious **Luggage Space** ensures spontaneous adventures.

# MORE

# *Excellence*

Get ready to embark on an extraordinary journey with the Corolla Cross Hybrid Electric. This vehicle is driven for such excellence that can transcend you to the future. With the power + kick sensor, loading and unloading has become effortless, and hill assist, CVT, cruise control, traction control and VSC provide an advanced and convenient driving experience.





Conveniently load and unload your cargo with **Powered Back Door** and **Kick Sensor**.



**Hill Start Assist** prevents roll back on steep roads.



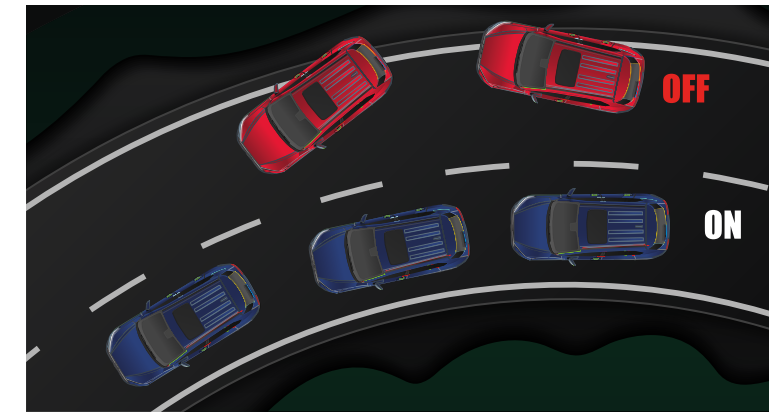
**Continuous Variable Transmission (CVT)** ensures seamless and efficient driving experience.

- Specifications may vary based on the model. Please visit [www.toyota-indus.com](http://www.toyota-indus.com) for model wise specifications sheet.

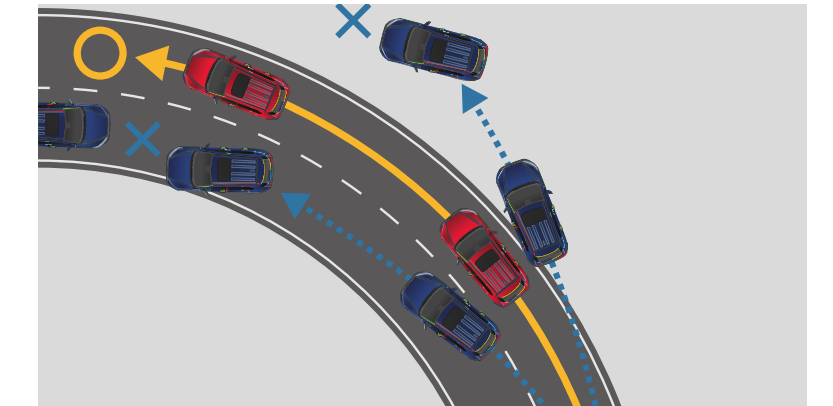




**Cruise Control** helps maintain the speed and **Electric Power Steering (EPS)** assists in smooth maneuvering and greater stability for a comfortable and efficient drive that enhances the driving experience.



**Traction Control** helps maintain stability by stopping the wheels from spinning on wet, icy or uneven surfaces.



**Vehicle Stability Control (VSC)** prevents the vehicle from skidding sideways when losing traction in unexpected driving conditions.



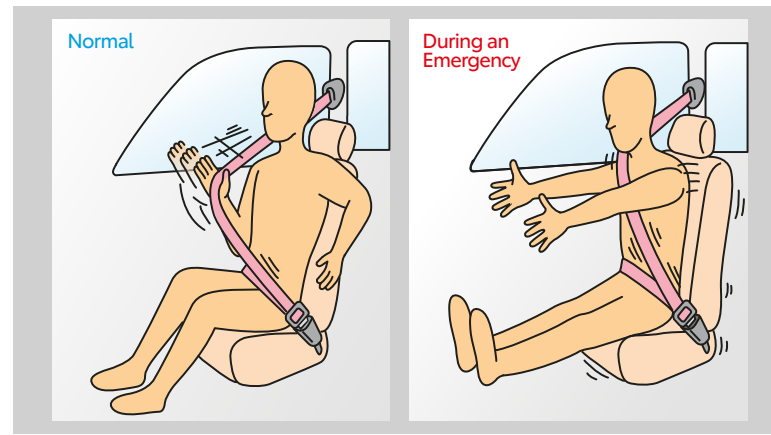
# MORE *Safety*

Safety\* is a fundamental commitment in the Corolla Cross Hybrid Electric. Keep yourself and your loved ones protected with 7 SRS airbags placed all over the vehicle to provide ultimate safety against certain types of crash. The built-in blind spot monitor, parking sensors and RCTA keep you safe on the roads, while the seatbelts and child restraint system keep you and your loved ones safe inside the vehicle, making every journey peaceful.

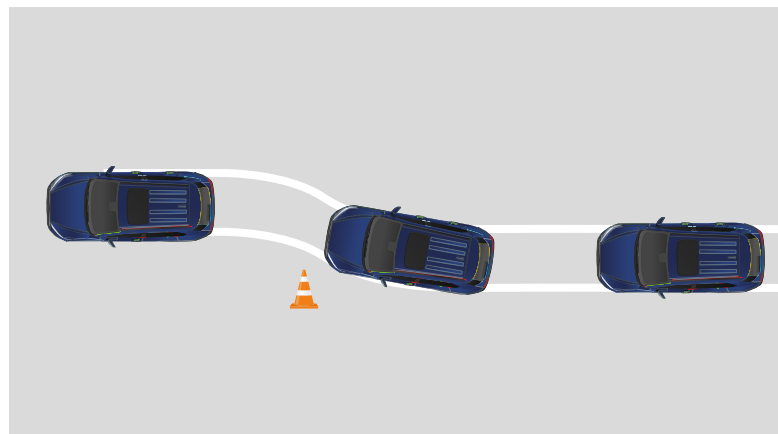
\*These safety features are subject to the terms outlined in the owner's manual of the vehicle.



**7 SRS Air Bags** provide protection to the driver as well as the passengers in case of emergency.



**Seatbelts** provide the passengers with added restraint during certain types of impact to help mitigate injury.

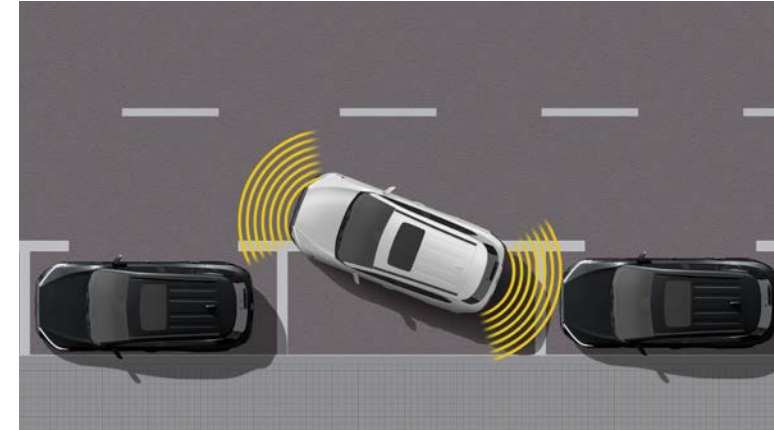


**Anti-Lock Braking System (ABS)** helps maintain steering control when simultaneously braking and turning on slippery surfaces.



**ISOFIX Child Restraint System** is located at the rear that allows appropriate securing of child safety seat.





Maneuver with precision using **Clearance Sonar** and **Rear Cross-Traffic Alert (RCTA)** that gives you better understanding of the surroundings while parking.



The Corolla Cross will ensure that you experience a worry-free drive with **Auto Rain Sensor**.



Drive confidently with a built-in **Blind Spot Monitor** that detects vehicles approaching in the adjacent lane.



**Engine Immobilizer** is an anti-theft system that provides deterrence against theft.

# MORE *Colors*

The Corolla Cross Hybrid Electric offers a wide range of vibrant and elegant colors of the exterior to choose from, giving people the freedom to explore their style.

**Metal Stream Metallic**



**Celestite Grey**



**Attitude Black**



**Dark Blue Mica Metallic**



**Red Mica Metallic**



**Super White**

